




hameln pharma ltd

# Carbon Reduction Plan

Publication Date: 24<sup>th</sup> January 2024



hameln pharma ltd  
Nexus, Gloucester Business Park,  
Gloucester, GL3 4AG, UK

Managing Directors  
Stephen Watkin & Beate Küter

Registered in England  
01034697

VAT No  
GB135694057

## Document History

Document Version	Revision Date	Revision Details
01	15/02/2023	New document
02	03/01/2024	Replaced initial baseline year with new one (section 2), updated section 3 with 2022 data, updated section 4 with new emissions reduction targets and emissions reduction projection; updated section 5 with completed and new carbon reduction initiatives.
03	24/01/2024	Breaking down of scope 3 baseline and current emissions as requested by the NHS England CRP Checking Service Team.

**Contents**

- 1 Commitment to Achieving Net Zero ..... 4
- 2 Baseline Emissions Footprint (2022) ..... 4
- 3 Current Emissions Reporting (2022) ..... 5
- 4 Emissions Reduction Targets ..... 5
  - 4.1 General ..... 5
  - 4.2 Scope 1 Emissions ..... 5
  - 4.3 Scope 2 Emissions ..... 5
  - 4.4 Scope 3 Emissions ..... 6
  - 4.5 Emissions Reduction Projection ..... 6
    - 4.5.1 Scope 1 & 2 Emissions Reduction Projection ..... 6
    - 4.5.2 Scope 3 Emissions Reduction Projection ..... 6
- 5 Carbon Reduction Initiatives ..... 7
  - 5.1 Completed Carbon Reduction Initiatives ..... 7
    - 5.1.1 Reduce Scope 1 Emissions ..... 7
    - 5.1.2 Reduce Scope 2 Emissions ..... 7
    - 5.1.3 Reduce Scope 3 Emissions ..... 7
    - 5.1.4 Carbon Offsetting Schemes ..... 8
    - 5.1.5 Other Initiatives ..... 8
  - 5.2 Future Carbon Reduction Initiatives ..... 9
    - 5.2.1 Reduce Scope 1 Emissions ..... 9
    - 5.2.2 Reduce Scope 2 Emissions ..... 9
    - 5.2.3 Reduce Scope 3 Emissions ..... 9
    - 5.2.4 Other Initiatives ..... 10
- 6 Declaration and Sign Off ..... 11



## 1 Commitment to Achieving Net Zero

hameln pharma ltd is committed to achieving Net Zero emissions by 2045.

## 2 Baseline Emissions Footprint (2022)

Following its carbon footprint calculation for 2022, hameln pharma ltd have decided to use the 2022 emissions as the new baseline going forward. Prior to 2022, hameln pharma ltd had undertaken an initial carbon footprint calculation for 2019 but upon review of this calculation, it was recognised that the data quality for the 2022 calculations was significantly superior to the data used for the calculation of the initial baseline. Since 2019 a number of carbon reduction initiatives have already been completed (e.g. company car policy, updating of lighting in the office, use of more energy-efficient equipment, cycle to work scheme, use of online meeting vs travel, working from home).

The 2022 baseline emissions data is the reference point against which future emission reduction is going to be measured.

Baseline year: 2022	
Additional details relating to the baseline emissions calculations	
<p><i>As its baseline and point of reference, hameln pharma ltd have chosen its greenhouse gas emissions footprint in 2022. The below data is the result of collecting consumption and spend data, researching emission factors and calculating the carbon emissions.</i></p> <p><i>In addition to the NHS requirements, hameln pharma ltd have included all scope 3 categories in their 2022 carbon footprint calculations.</i></p> <p><i>Furthermore, the "operational control approach" was used for the calculations and the facilities and operations included in the assessment are the offices and warehouses at Nexus Hurricane Road, Gloucester Business Park, Gloucester, Gloucestershire, GL3 4AG (Unit C &amp; Unit A4).</i></p>	
Baseline year 2022 emissions:	
Emission category	Total (tCO <sub>2</sub> e)
Scope 1:	88.62 (4.7%)
Scope 2:	66.73 (3.5%)
Scope 3:	1,735.39 (91.8%)
<i>thereof "Upstream transportation and distribution"</i>	<i>152.5 (8.1%)</i>
<i>thereof "Waste generated in operations"</i>	<i>0.6 (0.0%)</i>
<i>thereof "Business travel"</i>	<i>82.9 (4.4%)</i>
<i>thereof "Employee commuting"</i>	<i>64.8 (3.4%)</i>
<i>thereof "Downstream transportation and distribution"</i>	<i>3.2 (0.2%)</i>
<i>thereof all other categories</i>	<i>1,431.39 (75.7%)</i>
<b>Total emissions:</b>	<b>1,890.74 (100%)</b>

### 3 Current Emissions Reporting (2022)

Following table presents the results of hameln pharma ltd's carbon footprint calculation for 2022. To note is that in addition to the NHS requirements, hameln pharma ltd have included all scope 3 categories in their 2022 carbon footprint calculations.

Reporting year: 2022	
Emission category	Total (tCO <sub>2</sub> e)
Scope 1:	88.62 (4.7%)
Scope 2:	66.73 (3.5%)
Scope 3:	1,735.39 (91.8%)
<i>thereof "Upstream transportation and distribution"</i>	152.5 (8.1%)
<i>thereof "Waste generated in operations"</i>	0.6 (0.0%)
<i>thereof "Business travel"</i>	82.9 (4.4%)
<i>thereof "Employee commuting"</i>	64.8 (3.4%)
<i>thereof "Downstream transportation and distribution"</i>	3.2 (0.2%)
<i>thereof all other categories</i>	1,431.39 (75.7%)
<b>Total emissions:</b>	<b>1,890.74 (100%)</b>

## 4 Emissions Reduction Targets

### 4.1 General

To continue its progress to achieving Net Zero and in line with the NHS, hameln pharma ltd have adopted the following carbon reduction targets:

- (1) For the emissions hameln pharma ltd control directly, hameln pharma ltd aim to reach Net Zero by 2040, with an ambition to reach an 80% reduction by 2028-2032.
- (2) For the emissions hameln pharma ltd are able to influence, hameln pharma ltd aim to reach Net Zero by 2045, with an ambition to reach an 80% reduction by 2036-2039.

### 4.2 Scope 1 Emissions

To achieve Net Zero, hameln pharma ltd intend to reduce scope 1 emissions by 88.62 tCO<sub>2</sub>e by 2040. Aligned with the NHS targets, the ambition is to reach a reduction of 80% (i.e. 70.90 tCO<sub>2</sub>e) by 2028-2032 which results in reducing emissions by min. 7.88 tCO<sub>2</sub>e (8.9%) annually (compared to the 2022 baseline). This may not be linear within every reporting year and may average out at 8.9% annually over the course of the journey towards Net Zero.

### 4.3 Scope 2 Emissions

To achieve Net Zero, hameln pharma ltd intend to reduce scope 2 emissions by 66.73 tCO<sub>2</sub>e by 2040. Aligned with the NHS targets, the ambition is to reach a reduction of 80% (i.e. 53.38 tCO<sub>2</sub>e) by 2028-2032 which results in reducing emissions by min. 5.93 tCO<sub>2</sub>e (8.9%) annually (compared to the 2022

baseline). This may not be linear within every reporting year and may average out at 8.9% annually over the course of the journey towards Net Zero.

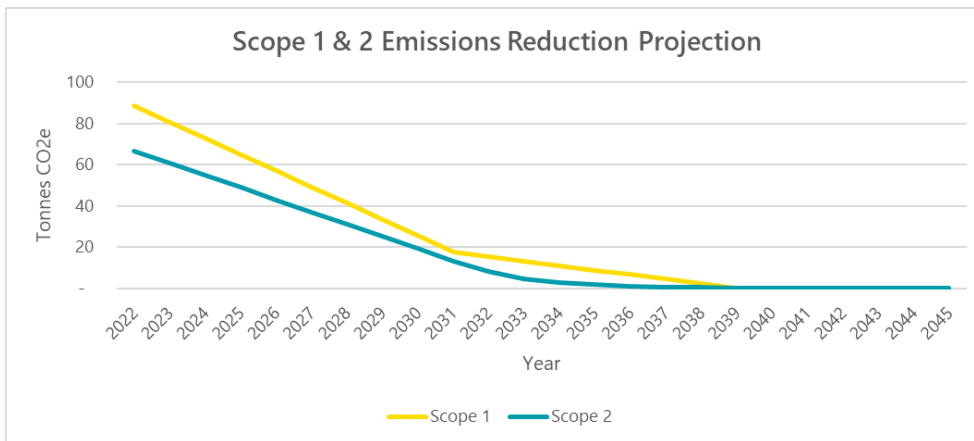
#### 4.4 Scope 3 Emissions

To achieve Net Zero, hameln pharma ltd intend to reduce scope 3 emissions by 1,735.39 tCO<sub>2</sub>e by 2045. Aligned with the NHS targets, the ambition is to reach an 80% reduction by 2036 to 2039 (compared to the 2022 baseline). The reduction is not expected to be linear as many business partners are likely to be still in the early stages to becoming Net Zero themselves.

#### 4.5 Emissions Reduction Projection

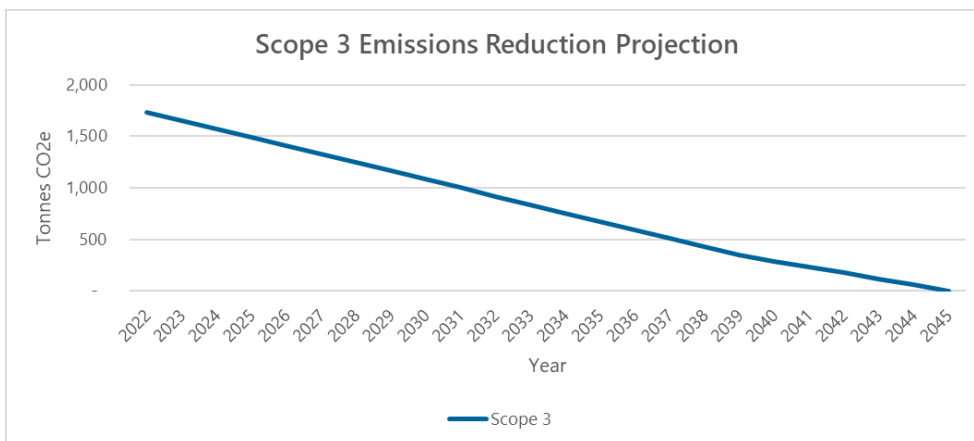
##### 4.5.1 Scope 1 & 2 Emissions Reduction Projection

The below chart illustrates hameln pharma ltd’s scope 1 and scope 2 emissions reduction to reach Net Zero by 2040.



##### 4.5.2 Scope 3 Emissions Reduction Projection

The below chart illustrates hameln pharma ltd’s scope 3 emissions reduction to reach Net Zero by 2045.



## 5 Carbon Reduction Initiatives

### 5.1 Completed Carbon Reduction Initiatives

#### 5.1.1 Reduce Scope 1 Emissions

##### **Company Car Policy**

hameln pharma ltd have updated their company car policy to state that all company cars must be hybrid or fully electric. Electric chargers are installed on site so that company cars can be charged during the working day.

#### 5.1.2 Reduce Scope 2 Emissions

##### **Lighting**

In addition to existing PIR (Passive Infra-Red) switches in all offices, timed lighting has been installed in a kitchen area to prevent lights being left on when the area is not in use.

##### **Energy-efficient equipment**

New and more energy-efficient free-standing freezers replaced old freezers in January 2023.

All laser printers were replaced with new and more efficient models in February 2023.

##### **Renewable Energy**

hameln pharma ltd is committed to purchase renewable energy and has therefore opted for a "Renewable Tariff" since July 2023.

#### 5.1.3 Reduce Scope 3 Emissions

##### **Cycle to Work Scheme**

hameln pharma ltd offer all staff the opportunity to take advantage of the cycle to work scheme contributing to the reduction in carbon emissions whilst at the same time promoting healthier journeys to and from work.

##### **Online Meetings**

Staff are encouraged to conduct online meetings using Microsoft Teams and Zoom to reduce travel, thereby contributing to the reduction in carbon emissions caused by business travel and employee commuting.

##### **Working from Home**

All office staff have been provided with a home office setup to enable working from home and thus contributing to the reduction in carbon emissions caused by business travel and employee commuting.

##### **E-invoicing**

To improve the company's sustainable business efforts and reduce the overall environmental impact of processing invoices, hameln pharma ltd have switched to using e-invoicing. Approx. 97% of all invoices are now sent to our customers electronically.

##### **Packaging material**

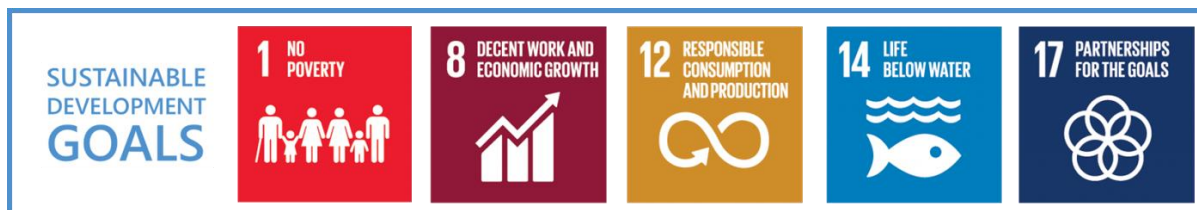
hameln pharma ltd have reviewed the packaging material which had been used to ship product to its customers. Following this review, it was decided to source and use recycled packaging material where possible.



### 5.1.4 Carbon Offsetting Schemes

Many of hameln pharma ltd’s carbon reduction initiatives will only have an impact in the future. Therefore, and to underline the commitment, hameln pharma ltd assessed carbon offsetting schemes in order to invest into carbon reduction in this way until its own initiatives materialise and have the expected positive impact.

In 2023, hameln pharma ltd have offset their whole 2022 scope 1 and scope 2 emissions by investing in project #1087 Ocean protection<sup>1</sup>. The project contributes to the below listed United Nations’ Sustainable Development Goals (SDGs) by building recycling structures and supporting people experiencing poverty, among other benefits.



### 5.1.5 Other Initiatives

#### Partnership with Environmental, Social & Governance (ESG) Specialists

hameln pharma’s mission is to make *“a real difference to people’s lives today and in the future, because everything we do is driven by the understanding that we are all patients.”*<sup>2</sup>. hameln pharma recognise that this is not just done by supplying patients with products but that its responsibility goes beyond that and hameln pharma therefore works together with ESG specialists to monitor its impact on the planet and to develop its own ESG programme.

<sup>1</sup> More information about project #1087 Ocean protection: <https://fpm.climatepartner.com/project/1087/en>

<sup>2</sup> <https://www.hameln-pharma.com/company/corporate-mission-statement/>





## 5.2 Future Carbon Reduction Initiatives

### 5.2.1 Reduce Scope 1 Emissions

Review of currently used refrigerants and where possible switching to more environmentally friendly options.

### 5.2.2 Reduce Scope 2 Emissions

#### Lighting

In addition to the already updated lighting in the offices and to reduce the amount of required electricity, the lighting in the warehouses is planned to be upgraded to new and more efficient lighting options.

### 5.2.3 Reduce Scope 3 Emissions

#### Supplier engagement

Perform a risk assessment on all suppliers and engage with them to work on potential improvements together.

#### Eco friendly paper

Review of currently used paper and where possible switching to more environmentally friendly options.

#### Document design

Review current design of documents which are being printed regularly and develop alternative designs that would lead to reducing the paper usage (e.g. delivery documentation).

#### Printing policy

Create a policy to set out guidelines for printing of documents (e.g. black/white vs colour, double-sided) to reduce the amount of paper usage.

#### Travel policy

Create a policy to set out guidelines regarding the use of public transport and paying for carbon off setting where possible.

#### Electric car charging policy

Create a policy to set out guidelines that regulate how electric car charging points located on workplace premises can be used for company and private cars. This is to facilitate all staff commuting in electric/hybrid cars where feasible.

#### Working from home policy

Create a working from home policy to set out guidelines that regulate when staff can work from home and thus contributing to the reduction in carbon emissions caused by business travel and employee commuting.

#### Shipment services policy

Review current procedure and create a policy to set out guidelines regarding when to use the 'dedicated shipment' and 'groupage shipment' options.



### **New facilities**

hameln pharma ltd is intending to move into new facilities within the next two years. Making the new facilities as low-carbon as possible is of great importance and this topic is part of the ongoing planning.

*Note: in 2022 hameln pharma ltd started a project to install solar panels to reduce its carbon emissions and use renewable energy. However, this project has been mothballed as hameln pharma ltd is planning to move into new facilities within the next two years.*

### **5.2.4 Other Initiatives**

#### **Environmental awareness training**

hameln pharma ltd will provide environmental awareness training to all staff to improve understanding of environmental impacts and management. By raising awareness of common environmental impacts and highlighting ways to control them, hameln pharma ltd aims to improve the environmental culture and performance of its organisation.

#### **Carbon offsetting schemes**

Many of hameln pharma ltd's carbon reduction initiatives will only have an impact in the future. Therefore, and to underline the commitment, hameln pharma ltd is going to continue to assess carbon offsetting schemes in order to invest into carbon reduction in this way until its own initiatives materialise and have the expected positive impact.



## 6 Declaration and Sign Off

This Carbon Reduction Plan has been completed in accordance with PPN 06/21 and associated guidance and reporting standard for Carbon Reduction Plans.

Emissions have been reported and recorded in accordance with the published reporting standard for Carbon Reduction Plans and the GHG Reporting Protocol corporate standard<sup>3</sup> and uses the appropriate Government emission conversion factors for greenhouse gas company reporting<sup>4</sup>.

Scope 1 and Scope 2 emissions have been reported in accordance with Streamlined Energy & Carbon Reporting (SECR) requirements, and the required subset of Scope 3 emissions have been reported in accordance with the published reporting standard for Carbon Reduction Plans and the Corporate Value Chain (Scope 3) Standard<sup>5</sup>.

This Carbon Reduction Plan has been reviewed and signed off by the Managing Directors.

On behalf of hameln pharma ltd

Gloucester, 24<sup>th</sup> January 2024



**Stephen Watkin** | Managing Director



**Beate Küter** | Managing Director

<sup>3</sup> <https://ghgprotocol.org/corporate-standard>

<sup>4</sup> <https://www.gov.uk/government/collections/government-conversion-factors-for-company-reporting>

<sup>5</sup> <https://ghgprotocol.org/standards/scope-3-standard>

